

# METROPOLITAN STATE UNIVERSITY

## NURSING

### (RN to BSN)

#### Century Students:

Because of the MnSCU statewide Nursing Articulation agreement (see flow chart on the reverse side of this document), Metropolitan State will accept Century College's Nursing AS degree as a whole. Listed below are Metropolitan State's RN-BSN admission requirements and the program requirements and characteristics. Metro State also has programs in Entry Level MSN (students with Bachelors in non-nursing field), MSN ( Leadership and Management in Nursing ) and Doctorate of Nursing Practice (DNP). For more details see: <http://www.metrostate.edu/msweb/explore/cnhs/>

#### Admission Requirements:

- ❖ An Associate Degree or Diploma in Nursing (only MNSCU Community College & College of St. Catherine Associate Degrees are covered by the transfer agreement).
- ❖ Current Registered Nursing license.
- ❖ A cumulative grade point average of 2.50 (4.0 scale).
- ❖ Official degree plan approved and completion of the following pre-nursing courses (following application to MSU):
  - Writing in Your Major (Writ 331 –MSU course)-Recommend ENGL 1022 as preparation if student earned a “C” in ENGL 1021
  - Medical Ethics (Phil 321) – PHIL 1035 at Century College
  - Humanities (upper or lower division) Goal 6 – MnTC(Already complete w/ AS in Nursing from Century)
  - Statistics I (Stat 201) – MATH 1025 at Century College
  - Students should **consult with a MSU Nursing advisor before taking any of these courses at Century College**. Since at least 8 credits of upper division liberal studies courses are required for graduation, taking them at Metropolitan State may mean fewer courses total.
- ❖ Students need to apply to Metropolitan State and indicating interest in the RN-BSN Program. Once accepted, you may attend Orientation and begin the pre-nursing courses. New Student Orientation provides a thorough description of the program, required assessments, and cohort details.

#### Application Procedure:

For information and application materials, call the College of Nursing and Health Sciences at (651) 793-1375 or attend a free information session on the St. Paul campus. Call or go to <http://www.metrostate.edu/msweb/explore/cnhs/nursing/meetings/index.html> for schedule. Students may also contact an adviser at: <http://www.metrostate.edu/msweb/explore/cnhs/advising.html>

#### Program Characteristics:

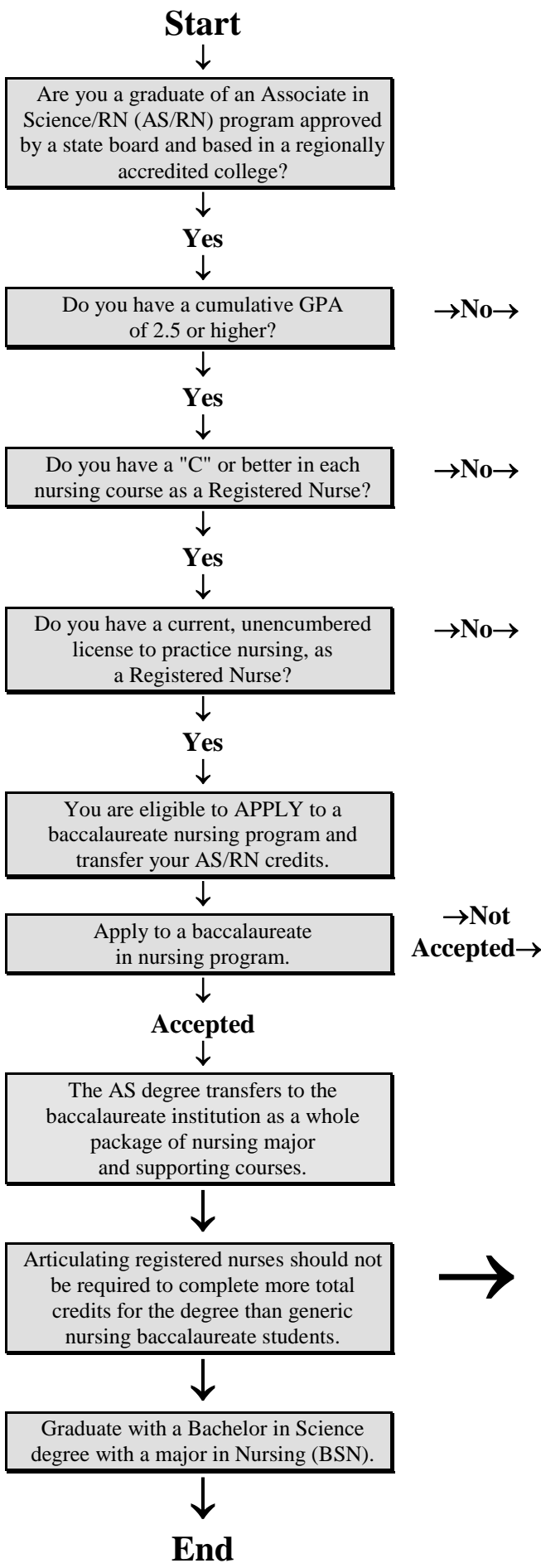
Generally, students will complete the BSN in a cohort group which will meet one day per week. These cohort groups take up to 8 credits of nursing classes for five semesters including summer. In addition to these nursing courses, students are required to meet all university degree requirements, including general education, liberal studies and goal areas, and complete a total of at least 120 semester credits, of which a minimum of 40 must be upper division. These requirements may be met by transfer agreements, transfer credits, and/or credits completed at Metropolitan State. **The RN to BSN program is also available with program courses offered at Century College and several Metro area Community Colleges.** Contact the College of Nursing and Health Sciences at 651-793-1375 for information.

#### Nursing Program Courses:

The nursing program requires students to complete 32 upper division Nursing credits. The remaining credits needed to graduate, if any, may be generated in courses supporting the nursing major.

#### General Information:

Consult the information in the file box labeled for this college in Century's Counseling & Career Center as well as the websites for both colleges. The above information is intended as a guide for program planning. Please contact the consultants listed periodically for changes and possible exceptions.



**Articulation:  
A Pathway for Associate in Science/RNs to seek a Bachelors Degree with a Major in Nursing.**

→No→ Take additional coursework to raise overall GPA, **BEFORE** applying to BSN program. Consult with your advisor if you are unsure about how to calculate your cumulative GPA.

→No→ Contact the BSN program for advice. Your options may include repeating the course(s) to meet minimum standards or seeking re-assessment of your knowledge.

→No→ Contact your state board of nursing.

→Not Accepted→ Talk to a nursing program advisor to explore your options.

<b>Credit requirements:</b>	
<i>Earned in AS/RN program:</i>	30-34 nursing credits 30-34 general education <b>64 Total credits</b>
<b>Total Credits required for BSN:</b>	<b>120-130 credits (distribution varies)</b>
<i>Accepted by most BSN programs:</i>	24 credits accepted toward nursing 8 credits accepted as electives (i.e. no loss of credit) 32 general education credits meet requirements for lower division college credit.
<b>Example:</b>	
<i>Accepted by BSN program:</i>	24 nursing credits 8 general elective credits 32 general education credits <b>64 credits already completed (minimum)</b>
<i>Needed to complete BSN:</i>	32 nursing credits Up to 16 pre-nursing credits 8 University required Liberal Studies Credits in electives if needed to reach 120 credits (minimum) <b>56 credits to be completed</b> <b>120 total credits for BSN</b>

